



**ZUG: Swiss power  
of innovation in the  
kitchen and laundry  
room**



# Explanation of symbols for standard appliances

## Steaming, baking, cooking and coffee brewing

	Illumination
	Top/bottom heat
	Bottom heat (pivoting)
	Real hot air
	PizzaPlus
	Hot air humid
	Forced convection (top heat + bottom heat + fan)
	Large grill
	Small grill
	Grill-forced convection
	Food probe
	Soft roasting
	Electronic timer (with additional features depending on model)
	Plain text display
	Electronic Steam System (ESS)
	GourmetSteam
	Steam
	Regeneration
	Professional baking
	ZUG AromaControl
	Large cup
	Medium cup
	Small cup
	Hot water
	Ultra quiet

## Front design

	Plate glass
	ChromeClass
	Colour: Nero
	Colour: White
	Fully integrated

## Rinsing

	Rack height adjustable to 4 positions and multi-functional integrated glass supports
	Automatic programme (additional savings of up to 30%)
	«Sprint» programme
	Fondue/Raclette programme
	Quick wash/Glass care programme
	3-in-1 detergent option
	Hygiene programme
	15 hour delayed start
	Upper rack only
	Plain text display
	Ultra quiet
	Limescale sensor
	Soil sensor and water hardness control

## Airing

	2-duct radial fans
	Number of motors/Watts
	Airflow volume in m³/h
	Static pressure in Pascal
	Number of halogen spotlights
	Electronic soft-touch operation
	Air vents: Ø ... mm with integrated non-return valve
	Air extraction
	Light with dimmer function

## Washing

	Whites/Coloureds 20°C-95°C
	Sport 60°C
	Sport 40°C
	Wool 30°C
	Hand wash 20°C
	Easy care
	Pre-wash
	Anti-mite
	Steam anti-crease
	Delayed start
	Temperature setting/Energy economy
	Spin speed/Stop after rinsing
	Degree of soiling/Soaking
	Quick wash cycle/End of programme
	Door opener
	Plain text display
	Turbidity sensor

## Drying

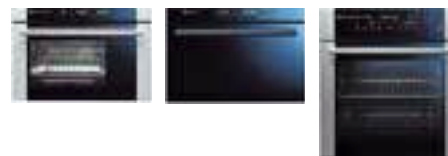
	Extra dry
	Standard dry
	Damp, ready to iron
	Damp
	Crease-guard programme
	Timed drying/Airing
	Delayed start
	Gentle
	End of programme

# Contents

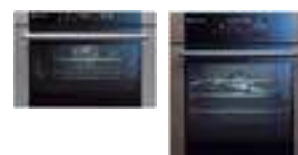
The company  
4-7



Steam ovens  
8-14



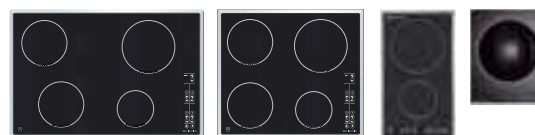
Ovens with built-in drawer system  
15-17



Coffee Center  
18-19



Induction hobs  
20-21



Designer island and wall hoods  
22-23



Dishwashers  
24-27



Washing machines and tumble dryers  
28-31



Product declarations  
32-34

# Revolutionary new designer hoods for state-of-the-art kitchens



## A high-quality model: Impressive and powerful

In many kitchens it's hard to imagine away the Mistral extraction hood. And with good reason: performance and elegance. The efficient extraction performance of up to 825 m<sup>3</sup>/h is ideal in semi-open or open kitchens. The excellent workmanship complements the perfect appearance in state-of-the-art kitchens.



### Side extraction: The most effective way to remove fumes and vapour

Side extraction works optimally over the entire cooking area, ensuring maximum extraction of the entire glass ceramic surface.

### Extremely quiet

Since the effective extraction is achieved through a high suction performance and a low motor speed – just 47 dB(A) at power level 1 – the hood is extremely quiet.



### New intelligent electronics

All models are equipped with a time-controlled indicator that reminds you when it's time to clean the grease filter.

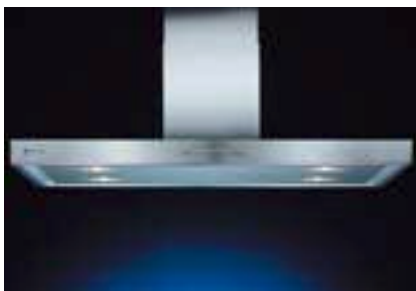
The automatic after-running function ensures that the atmosphere in the kitchen is comfortable even after you've spent lots of time cooking. Greasy and smelly vapours are a thing of the past!



### A selection of features available

The Mistral models are also popular because of their features. Instead of having to take out and reinstall several grease filters to clean them, the hoods are equipped with one single highly effective grease filter. This makes them much easier to use. A magnetic strip around the entire hood ensures that the grease filter stays firmly in place and that no grease can get through any openings or gaps into the body of the hood or the fan propeller.

# Designer island and wall hoods



**DI-Mistral**  
**DI-M10**, island hood  
**DI-M12**, island hood

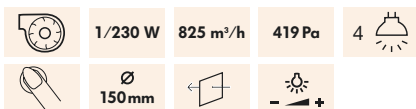
**DW-Mistral**  
**DW-M9**, wall hood  
**DW-M12**, wall hood

## Front design



- 90 cm, 100 cm or 120 cm wide
- High-quality workmanship using chrome-nickel steel and glass

## Operating modes and features



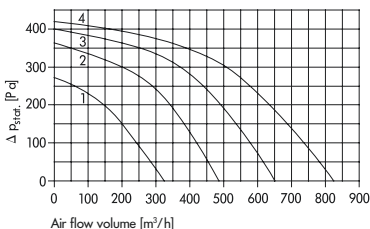
## Performance/Efficiency

- 1 metal grease filter
- Good grease absorption
- Electronic illumination
- Excellent illumination of cooking area
- Very efficient extraction performance thanks to side extraction

## Operation/Maintenance

- 4 power levels, incl. 1 intensive setting
- Fan power level display
- Automatic clean grease filter indicator
- Automatic after-running
- Illumination with dimmer function
- Extremely easy to use and clean
- Grease filter washable in dishwasher
- Optional connection, e.g. for existing air inlet/outlet valve

## Air throughput diagram



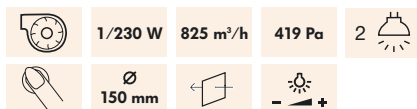
**DW-Vertica**  
**DW-V9**, wall hood

## Front design



- 90 cm wide
- High-quality, vertical wall hood made of ChromeClass and glass

## Operating modes and features



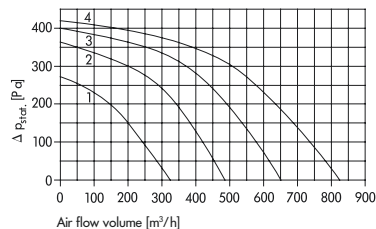
## Performance/Efficiency

- 1 metal grease filter
- Good grease absorption
- Electronic illumination
- Excellent illumination of cooking area
- Very efficient extraction performance thanks to side extraction

## Operation/Maintenance

- 4 power levels
- Fan power level display
- Automatic clean grease filter indicator
- Automatic after-running
- Illumination with dimmer function
- Operation using touch screen
- Extremely easy to use and clean
- Grease filter washable in dishwasher
- Optional connection, e.g. for existing air inlet/outlet valve

## Air throughput diagram



**DI-RG10**, island hood  
**DW-RG9**, wall hood

## Front design



- 90 cm or 100 cm wide
- High-quality workmanship using chrome-nickel steel and glass

## Operating modes and features



## Performance/Efficiency

- 1 metal grease filter
- Good grease absorption
- Electronic illumination
- Excellent illumination of cooking area

## Operation/Maintenance

- 4 power levels, incl. 1 intensive setting
- Fan power level display
- Automatic clean grease filter indicator
- Extremely easy to use and clean
- Grease filter washable in dishwasher

## Air throughput diagram

