



**ZUG: Swiss power  
of innovation in the  
kitchen and laundry  
room**



# Explanation of symbols for standard appliances

## Steaming, baking, cooking and coffee brewing

	Illumination
	Top/bottom heat
	Bottom heat (pivoting)
	Real hot air
	PizzaPlus
	Hot air humid
	Forced convection (top heat + bottom heat + fan)
	Large grill
	Small grill
	Grill-forced convection
	Food probe
	Soft roasting
	Electronic timer (with additional features depending on model)
	Plain text display
	Electronic Steam System (ESS)
	GourmetSteam
	Steam
	Regeneration
	Professional baking
	ZUG AromaControl
	Large cup
	Medium cup
	Small cup
	Hot water
	Ultra quiet

## Front design

	Plate glass
	ChromeClass
	Colour: Nero
	Colour: White
	Fully integrated

## Rinsing

	Rack height adjustable to 4 positions and multi-functional integrated glass supports
	Automatic programme (additional savings of up to 30%)
	«Sprint» programme
	Fondue/Raclette programme
	Quick wash/Glass care programme
	3-in-1 detergent option
	Hygiene programme
	15 hour delayed start
	Upper rack only
	Plain text display
	Ultra quiet
	Limescale sensor
	Soil sensor and water hardness control

## Airing

	2-duct radial fans
	Number of motors/Watts
	Airflow volume in m³/h
	Static pressure in Pascal
	Number of halogen spotlights
	Electronic soft-touch operation
	Air vents: Ø ... mm with integrated non-return valve
	Air extraction
	Light with dimmer function

## Washing

	Whites/Coloureds 20°C-95°C
	Sport 60°C
	Sport 40°C
	Wool 30°C
	Hand wash 20°C
	Easy care
	Pre-wash
	Anti-mite
	Steam anti-crease
	Delayed start
	Temperature setting/Energy economy
	Spin speed/Stop after rinsing
	Degree of soiling/Soaking
	Quick wash cycle/End of programme
	Door opener
	Plain text display
	Turbidity sensor

## Drying

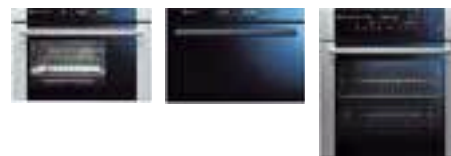
	Extra dry
	Standard dry
	Damp, ready to iron
	Damp
	Crease-guard programme
	Timed drying/Airing
	Delayed start
	Gentle
	End of programme

# Contents

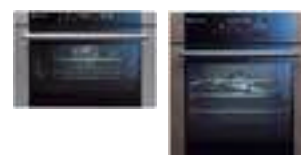
The company  
4-7



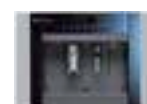
Steam ovens  
8-14



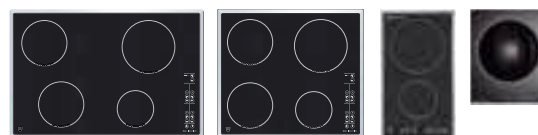
Ovens with built-in drawer system  
15-17



Coffee Center  
18-19



Induction hobs  
20-21



Designer island and wall hoods  
22-23



Dishwashers  
24-27



Washing machines and tumble dryers  
28-31



Product declarations  
32-34

ZUG innovations are revolutionizing  
the laundry room



## World-exclusive steam anti-crease The programme and time savings are revolutionary



Who enjoys ironing? Ironing is seen as a time-consuming chore. Smoothing out tough creases makes ironing twice as hard work. ZUG is tackling the much-hated problem of wrinkles and creases with its new, exclusive **steam anti-crease programme**. Laundry is washed gently, spun dry and then treated with steam so that it comes out with far fewer creases. This makes ironing easier and faster than ever before!

### A world exclusive with two applications

The world-exclusive steam anti-crease can be used in combination with almost all the other programmes. Steam anti-crease can also be selected as a separate programme for smoothing out creases and adding moisture to the laundry.

The outstanding effectiveness of the anti-crease function has been tested and verified by the Swiss textile testing institute TESTEX.



## World-exclusive pivoting operating panel More ergonomics, more comfort

Everyone, whether tall or short, should enjoy the same degree of comfort of use – hence the need for an **operating panel that moves** and can be set in the ergonomically correct position for the user. There is no need to bend over or stand on your toes to operate the Adora! Plus, being able to make individualized adjustments means that you have the best possible view of the operating panel, which is particularly appreciated in poor lighting conditions – which is not infrequently the case in the laundry room.



## World-exclusive anti-mite programme – and other innovations for complete skin protection



No dust mite can survive the new Adora's **anti-mite programme**. The washing machine runs for at least an hour at 60 °C and rinses the laundry so thoroughly that nothing remains of the dust mites – not even their droppings, which are the cause of many respiratory problems.

Thanks to the new Adora's **skin protection programme** with its optimized rinse cycle, skin irritation and itching caused by detergent residue are a thing of the past. For complete skin protection it is important that the appliance be cleaned thoroughly, too. The new ZUG **appliance hygiene**, an innovation based on steam efficiency, is extremely thorough. The cleaning process takes approximately 20 minutes during which time hot steam gets into every nook and cranny, ensuring the Adora is always clean and hygienic.



### Gentle on the skin for years: The exclusive ZUG honeycomb drum

Back in the days when no one even mentioned allergies in connection with washing machines, the Adora washing machine featured a honeycomb drum with 8,562 holes – twice as many as conventional wash drums. Thanks to this superior concept, the Adora ensures extremely thorough cleaning of the laundry as well as an extremely thorough rinsing and removal of detergent residues, which can irritate the skin.

One of the other cornerstones of this concept is that the laundry is treated gently in all the programmes and in the spin cycle.

# A variety of possibilities – the perfect washing system with a forward-looking design

## Washing and drying with the new Adora: A selection of possible combinations

The stackable washer and dryer is ZUG's top-selling combination, but it is just one of many options because the new Adora washing machine and tumble dryer can be easily combined to meet the most individual of needs – be they features, space requirements or location. Just let us know what you want!



## Function and design: Focus on real needs

At ZUG, we believe where in the home the washing and drying is done is important. On the one hand, this means giving a lot of consideration to the constructional and functional features of an appliance. Yet, on the other hand, a top-functioning appliance with a high degree of usability and unequalled longevity is not enough. And this is because we also decide with our eyes. You have to like the look of a washing machine or tumble dryer and feel comfortable with it. At ZUG, we understand this. And that's why we continue to strive to set new milestones in function and design. We do not see design as a means to an end, but as meeting real needs in terms of the look of a ZUG appliance.



# Washing machines and tumble dryers



**Adora SL**

## Programmes and features



## Additional programmes

- Skin protection
- Appliance hygiene
- Degree of soiling/ Intensive
- Soaking
- Rinsing
- Conditioning, starching, waterproofing
- 24 hour delayed start
- Spinning at 400–1,600 rpm
- Soap washing
- Bio washing

## Additional features

- Pivoting operating panel
- Plain text display
- «Tip and go»
- Fully electronic controls
- Programme progress display
- Duration remaining display
- Water and energy economy
- Electronic control display

## Safety systems

- Unbalanced load detection
- Childproof lock
- Foam control
- Reinforced hose
- Installation plate

## Design

- Front loader
- Capacity: 5 kg
- Drum volume: 48 litres
- Floor/Stack appliance
- Door hinged left or right
- Chrome door
- Porthole door opening: Ø 30 cm
- Door opening angle: 180°



**Adora TLK**

## Programmes and features



## Additional programmes

- Fluffing programme
- Timed drying 0–90 mins
- 24 hour delayed start

## Additional features

- Pivoting operating panel
- 4-character digital display
- Step selection
- Fully electronic controls
- Level of dryness
- Programme progress display
- Duration remaining display
- Electronic control display
- Natural interior lighting
- Residual moisture sensor
- Reverse drum action
- Direct condensate water outlet

## Safety systems

- Temperature control
- Childproof lock
- Fluff filter detection
- Condenser detection
- Installation plate

## Design

- Condenser dryer
- Capacity: 6 kg
- Drum volume: 103 litres
- Floor/Stack appliance
- Door hinged left or right
- Porthole door opening: Ø 42 cm
- Door opening angle: 180°