

## Installation instructions

Range hood DF-SG8 / DF-SG9  
Built-in range hood



J541.53-1

13.12.13 FUW



The appliance should be installed by qualified personnel only. Each step must be carried out and checked in full in the order specified.

### Validity

These installation instructions apply to the models:

Type	Model no.	Construction width
DF-SG8	541	82 cm
DF-SG9	549	89.5 cm

### General notes



With the simultaneous operation of firing (e.g. wood, gas, oil or coal-fired heating systems), safe operation is only possible providing a room negative pressure of 4 Pa (0.04 mbar) is not exceeded at the location of the appliance. Risk of toxic fumes! An adequate flow of fresh air must be guaranteed, e.g. via non-closable openings in doors and windows and combined with ventilation wall bricks for incoming and exhaust air or by other technical means.



If the appliance is installed over hobs, each cooking zone must be fitted with an ignition fuse and the minimum distances (see Dimensions) must be adhered to.



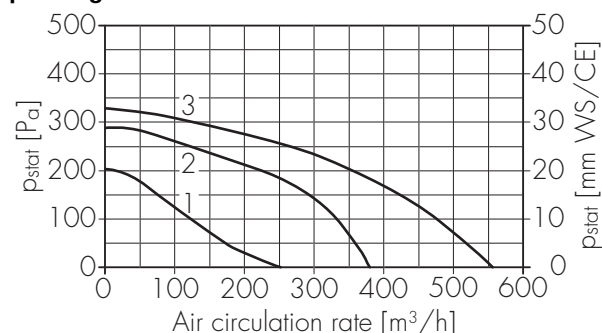
Efficient repairs can only be guaranteed if it is possible to disconnect the appliance at any time without causing any damage.

### Extraction mode



The extracted air must not be fed into a chimney which is used for exhausting fumes from appliances burning gas or other fuels. Always observe the local fire regulations.

### p-V diagram

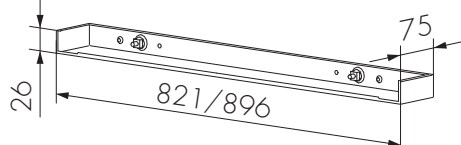


### Installation accessories supplied

All fixing elements are contained in the scope of delivery.

Profile section	Type	Width	Wall unit depth	Article no.			
				Nero	White	ChromeClass	AluClass
wide	DF-SG8	821	321–350 mm	H4.2288	H4.2289	H4.2290	H4.2291
wide	DF-SG9	896	321–350 mm	H4.2292	H4.2293	H4.2294	H4.2295

Profile section wide 321–350 mm



## Electrical connections



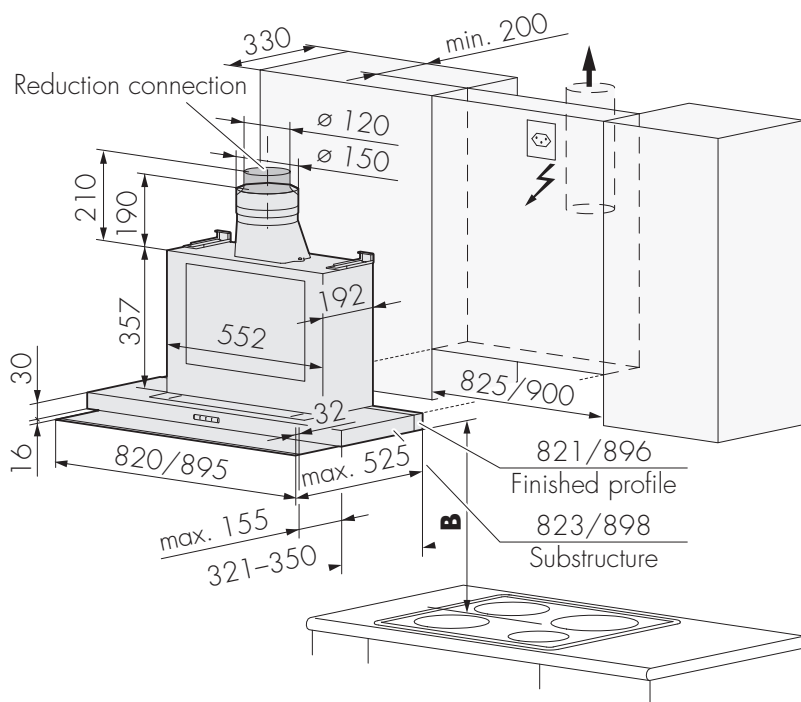
Electrical connections must be made by trained electricians in accordance with the guidelines and standards for low voltage installations and the specifications of the local electricity supply companies.

A plug-in appliance may only be connected to a socket outlet with earthing contact, installed according to specifications. An all-pole mains isolating device with 3 mm contact opening should be provided in the house wiring system. Switches, plug and socket devices, circuit breakers and fusible cut-outs which are accessible after installation and which have all-poles switching are permissible as isolating devices. Effective earthing and separately installed neutral and earth conductors ensure safe and fault-free operation. After installation, live parts and cables with basic insulation must not be accessible. Old installations should always be checked.

- Refer to the identification plate for specifications for the required mains voltage, current type and fuses.
- Application height of the appliance: up to max. 2000 m above sea level

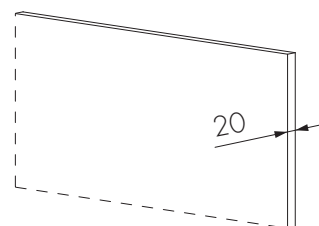
<b>Voltage</b>	<b>Rated load</b>	<b>Fuse</b>	<b>Mains cable</b>
230 V~ 50 Hz	316 W	10 A	1.2 m with «type 12» plug

## Dimensions



### Use of stone cladding

20 mm thick wall panels (granite, marble) with a chamfer are possible.



## Distance above hob



Minimum distance **B**

For electric hob: min. 600 mm

For gas hob: min. 750 mm

If the installation instructions for the gas hob stipulate a larger distance, this must be observed.

## Installation instructions

Range hood DF-SG8 / DF-SG9  
Built-in range hood



**J541.53-1**

13.12.13 FUW

### Recirculation mode

The following possibilities exist if the appliance is to be used in the recirculation mode:

– **Using an activated charcoal filter mounted directly in the appliance**



The cross-sectional area (air outlet area) of the ventilation grille must be at least 200cm<sup>2</sup>.

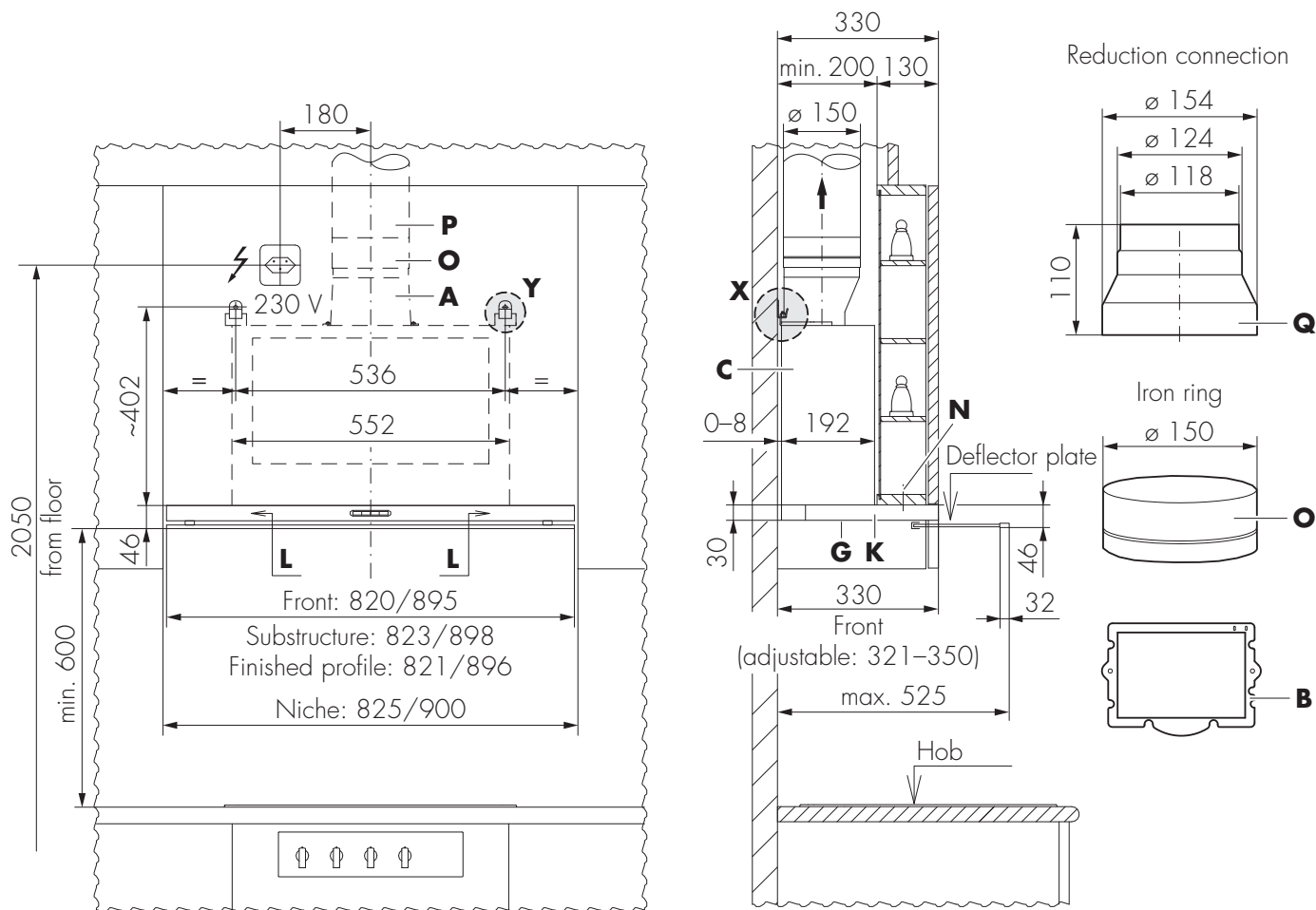
Here, the extracted air flows through and out the exhaust air connection and has to be blown back into the room through a ventilation grille in the ceiling cover.

– **Using an LRC air recycling cassette** (see H4.0830)

Here the activated charcoal filter is placed in the air recycling cassette. The extracted air flows through the exhaust air connection and an air extraction duct into the cassette and is then blown back through the air outlet grille into the room.

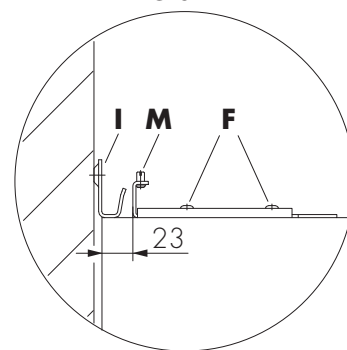


## Installation



1. Mount exhaust air connection **A** and seal **B** to fan box **C** with pan head screws.
2. Mount suspension bracket **D** on left/right to fan box **C** with spacers **E** and pan head screws **F** and set a distance of 23 mm from rear panel. Only lightly tighten the pan head screws **F**.
3. Remove grease filter **G**.
4. Drill holes for rawl plugs **H** on left/right in rear panel and fix retainer hooks **I** with countersunk head screws **J**.
5. Push fan box **C** into niche until suspension brackets **D** left/right can be pushed over retainer hooks **I**. Tighten the pan head screws **F**.
6. Set the wall unit depth (pull substructure **K** forward or push it back) and tighten screws **L** left/right.  
Set horizontal position with adjuster screws **M** left/right.
7. Fix range hood additionally to the wall unit with screws **N**.  
Fix metal ring **O** (ø 150 mm) to exhaust air connection and mount the venting hose **P**.  
A reduction connection **Q** can be used if required.

**Detail X**



**Detail Y**

