

## Installation instructions

Wall hood

Operating modes: extracted air/recirculation air

Range hood DWVHR9



J62010113-R02

15/01/2019



**The appliance should be installed by qualified personnel only.**  
**Each step must be carried out and checked in full in the order specified.**

### Validity

These installation instructions apply to:

**62010** (DWVHR9, construction width 90 cm)

**62030** (DWVHR9, construction width 90 cm)

### General notes



**If other firing systems are being used at the same time (e.g. wood, gas, oil or coal fired heating appliances), safe operation is only possible providing a room negative pressure of 4 Pa (0.04 mbar) is not exceeded at the location of the appliance.**

**Risk of toxic fumes! An adequate flow of fresh air must be guaranteed e.g. via non-closable openings in doors or windows and in combination with an air-intake/exhaust-air wall box or by other technical means.**



**If the appliance is installed over hobs, each cooking zone must be fitted with an ignition fuse and the minimum distances (see section «Dimensions») must be adhered to.**



**Efficient repairs can only be guaranteed if it is possible to uninstall the complete appliance at any time without causing any damage.**

### Identification plate

- Remove the grease filters. The identification plate is located on the inside of the appliance.

### Installation accessories supplied

All fixing elements are contained in the scope of delivery.

### Extraction mode



**The extracted air must not be fed into a chimney which is used for exhausting fumes from appliances burning gas or other fuels.**  
**Observe the local fire regulations.**

### Electrical connections



**Electrical connections must be carried out by qualified personnel in accordance with the guidelines and standards for low-voltage installations and the specifications of the local electricity supply companies.**

A plug-in appliance may only be connected to a socket outlet with earthing contact, installed according to specifications. An all-pole mains isolating device with 3 mm contact opening should be provided in the house wiring system. Switches, plug and socket devices, circuit breakers and fusible cut-outs which are accessible after installation and which have all-poles switching are permissible as isolating devices. Effective earthing and separately installed neutral and earth conductors ensure safe and fault-free operation. After installation, live parts and cables with basic insulation must not be accessible. Check old installations.

- The appliance is designed for use up to a max. altitude of 2000 m above sea level.
- Refer to the identification plate for information on the required mains voltage, current type and fuse protection.



**The mains plug must not be cut off.**

## Installation instructions

Wall hood

Operating modes: extracted air/recirculation air

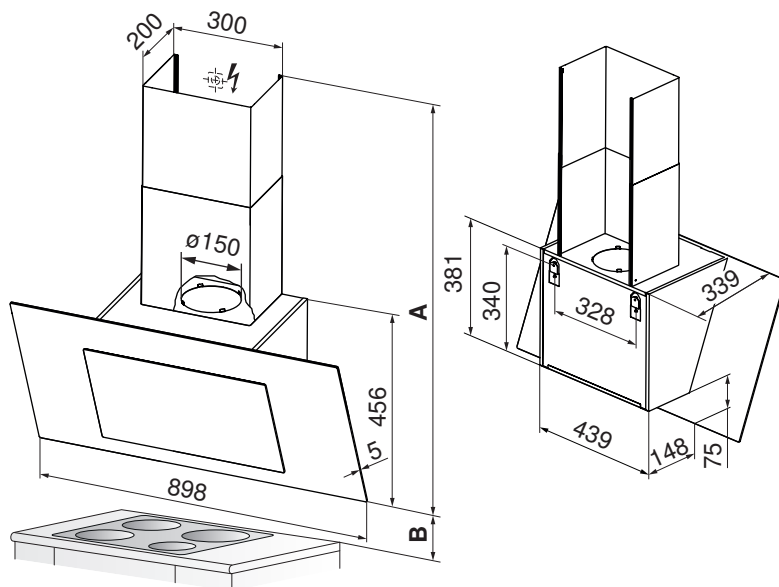
Range hood DWVHR9



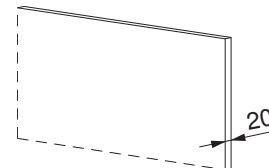
J62010113-R02

15/01/2019

## Dimensions



### Use of stone cladding



20 mm thick wall panels (granite, marble) are possible.

### Telescopic casing

(For extraction only, available in various heights)

Height **A**: See planning documents for kitchen appliances

### Distance above hob

Minimum distance **B**:

For electric hob: min. 450 mm

For gas hob: min. 500 mm

## Installation

### Note on installation

- Ensure the correct layout of the exhaust air duct as well as an adequate supply of intake air.  
**Exhaust air requires intake air.**
- Avoid routing the exhaust air pipeline to the side through the flue casing.
- Planning features for non-destructive de-installation and maintenance of the appliance.
  - Do not route telescopic casing in suspended ceilings.
  - Avoid silicon joints between the telescopic casing and the appliance.
  - All plastering, plasterboarding, wall papering or painting work is to be carried out prior to installing the appliance.

## Installation instructions

Wall hood

Operating modes: extracted air/recirculation air

Range hood DWVHR9

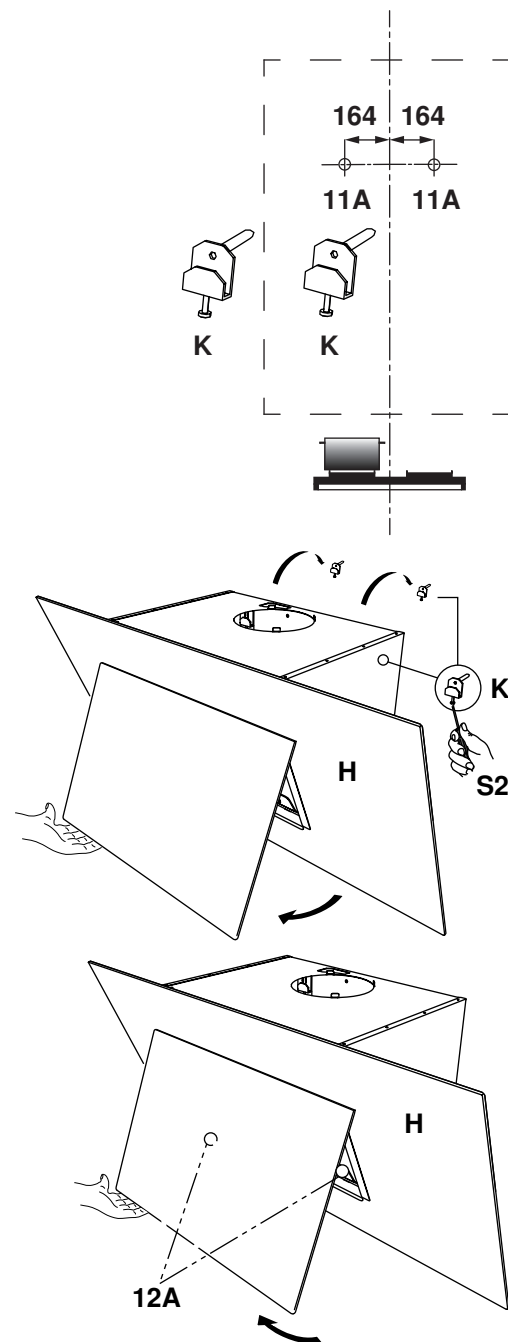


J62010113-R02

15/01/2019

### Installation for extraction and recirculation operation

1. Attach paper template to the wall and align horizontally.  
Observe distance to hob.
2. Drill two holes  $\varnothing 12$  mm for screws **11A** (M5×50 mm).
3. Open hood at the front and remove grease filters.
4. Fix mounting angle **K** with screws **11A** (M5×50 mm) and fit hood **H**.
5. Align hood **H** horizontally using adjusting screws **S2**.
6. Mark holes for screws **12A** (4×45 mm).
7. Take down hood **H** and drill holes  $\varnothing 8$  mm for two screws **12A** (4×45 mm).



## Installation instructions

Wall hood

Operating modes: extracted air/recirculation air

Range hood DWVHR9

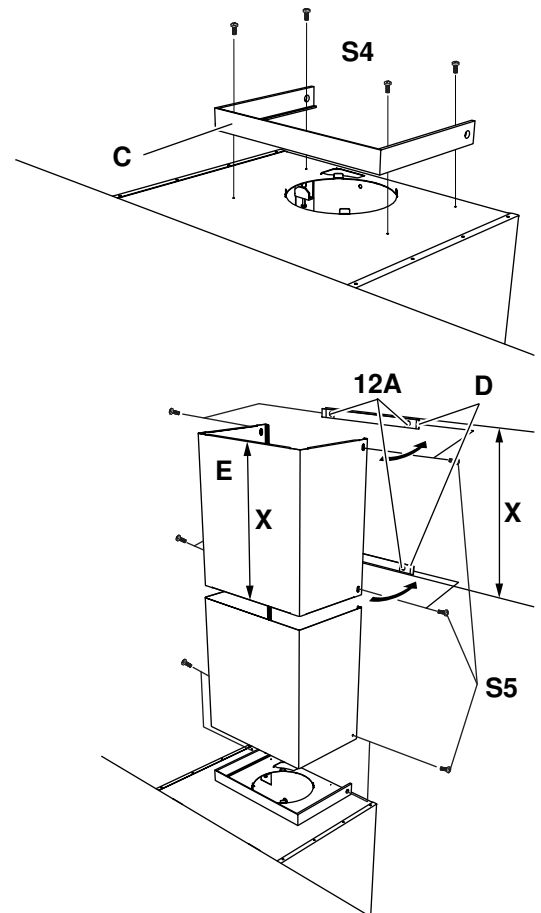


J62010113-R02

15/01/2019

### Installation for extraction operation only

8. Mount flue support **C** with four screws **S4** (3×10 mm).
9. Mount flue bracket **D** aligned centrally to the hood and 2 mm below the ceiling using screws **12A** (4×45 mm).
10. Connect exhaust hose to exhaust air connection. Ensure non-return flap valve is unrestricted.
11. Measure the height of the upper flue cover **E** and mount the same distance **X** below the flue bracket **D**.
12. Fit hood and tighten with two screws **12A** (4×45 mm).
13. Insert grease filters and close hood.
14. Connect the mains plug to the mains socket. Carry out function test.
15. Mount flue cover **E** with six screws **S5** (3×5 mm).



### Installation for recirculation operation only

8. Mount recirculation cover **F** using four screws **S4** (3×10 mm).
9. Fit hood and tighten with screws **12A** (4×45 mm).
10. Mount charcoal filter left and right of the fan.
11. Insert grease filters and close hood.
12. Connect the mains plug to the mains socket. Carry out function test.

